

2024 LEAPFROG  
ANNUAL MEETING AND  
AWARDS DINNER



PATIENTS  
COME FIRST

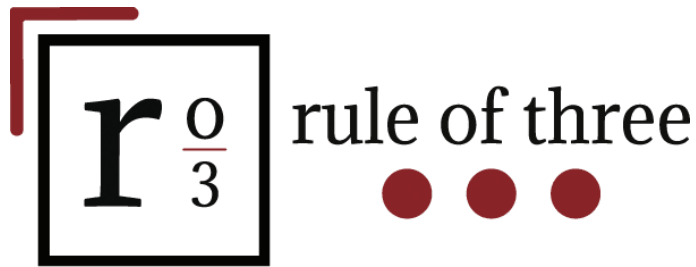
NATIONAL HARBOR, MD  
DECEMBER 17, 2024

# THANK YOU TO OUR SPONSORS!

## PLATINUM



## PREMIUM PRESENTING



## SILVER



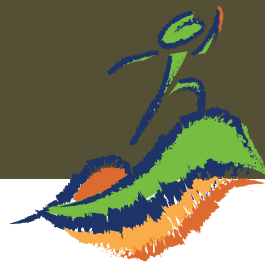
## BRONZE



## CHAMPION



2024 PROGRAM WELCOME LETTER:  
PATIENTS COME FIRST



Welcome to this year's Leapfrog Annual Meeting and Awards Dinner. In the wake of an historic and contentious election, we at Leapfrog remain deeply united by one purpose: ensuring patients come first.

Today, we gather to reaffirm that mission and explore how the patient experience is not only a priority, but a roadmap for meaningful transformation in health care. We have an exciting agenda ahead. We'll be inspired by Colonel Steven L. Coffee, one of the nation's most respected patient advocates. His journey, born out of the misdiagnosis and medical errors surrounding the care of his son, led him to a commitment to improving health care delivery and advocating for systemic change.

We will also hear from leaders in maternity care and in caring for people living with diabetes, who will share groundbreaking best practices for transforming inpatient care. Additionally, for the first time, we are featuring a poster session showcasing successful strategies used by hospitals and ambulatory surgery centers (ASCs) to achieve excellence in patient care through Leapfrog Standards.

We will also honor our health care heroes. In partnership with Costs of Care, we will present the Steven Schroeder Award for Outstanding Healthcare CEO, recognizing an individual who has made a significant impact in both the quality and affordability of care for patients. This evening, we'll celebrate the Leapfrog Top Hospitals and Top ASCs, recognizing their unwavering commitment to patient care excellence.

Today, we also honor the life and legacy of Suzanne Delbanco, whose untimely passing earlier this year left a profound impact on the health care community. Suzanne was a visionary leader whose work with Leapfrog and Catalyst for Payment Reform transformed national standards in care quality, payment reform and transparency. Her bold leadership continues to inspire us as we navigate an uncertain health care landscape.

Thank you for joining us today as we continue our work to put patients first, celebrate bold leaders and strive for a future where health care is safe, transparent and accessible for all.

Warm regards,



**Leah Binder, MA, MGA**  
President and CEO, The Leapfrog Group



**Linda Schwimmer, JD**  
Chair of the Leapfrog Board of Directors

BOARD OF DIRECTORS

OFFICERS

**Linda Schwimmer, JD (Board Chair)**  
PRESIDENT AND CEO, NEW JERSEY HEALTH CARE QUALITY INSTITUTE

**Vice Adm. Raquel C. Bono, MD, MBA, FACS (Vice Chair)**  
PRINCIPAL, RCB CONSULTING, LLC

**Michelle Martin (Chair Emeritus)**  
VICE PRESIDENT, TOTAL REWARDS EXPERIENCE, PARAMOUNT

**Sally Welborn (Secretary)**  
ADVISOR, WELBORN ADVISORY SERVICES; FORMER SENIOR VICE PRESIDENT OF GLOBAL BENEFITS, WALMART

**John G. Zern (Treasurer)**  
PRESIDENT AND CEO, RYAN SPECIALTY BENEFITS

AT LARGE

**Rumay Alexander, Ed.D., RN, FAAN**  
CLINICAL PROFESSOR, ASSOCIATE DEAN, UNIVERSITY OF NORTH CAROLINA AT CHAPEL HILL

**Irene Fraser, PhD**  
SENIOR FELLOW, NORC AT THE UNIVERSITY OF CHICAGO

**Carole Hemmelgarn**  
PROGRAM DIRECTOR, EXECUTIVE MASTER'S FOR CLINICAL QUALITY, SAFETY & LEADERSHIP, GEORGETOWN UNIVERSITY; SENIOR DIRECTOR, EDUCATION, MEDSTAR HEALTH; FOUNDING MEMBER, PATIENTS FOR PATIENT SAFETY U.S.

**Ellen Kelsay, MA**  
PRESIDENT AND CEO, BUSINESS GROUP ON HEALTH

**Janet Lucas-Taylor**  
VICE PRESIDENT, EMPLOYEE BENEFITS, MR. COOPER GROUP

**Kenneth Mendez**  
PRESIDENT AND CEO, ASTHMA AND ALLERGY FOUNDATION OF AMERICA

**Arnold Milstein, MD**  
PROFESSOR OF MEDICINE, DIRECTOR OF THE CLINICAL EXCELLENCE RESEARCH CENTER, STANFORD UNIVERSITY

**Dolores Mitchell**  
FORMER EXECUTIVE DIRECTOR OF THE MASSACHUSETTS GROUP INSURANCE COMMISSION

**Aaron Schrader, MS**  
STATE HUMAN RESOURCE ADMINISTRATOR, STATE OF DELAWARE STATEWIDE BENEFITS OFFICE, DEPARTMENT OF HUMAN RESOURCES

**Susan Sheridan, MIM, MBA, DHL**  
FOUNDING MEMBER, PATIENTS FOR PATIENT SAFETY U.S.

**Karen van Caulil, PhD**  
PRESIDENT AND CEO, FLORIDA ALLIANCE FOR HEALTHCARE VALUE

**Lina Walker, PhD**  
VICE PRESIDENT, GLOBAL THOUGHT LEADERSHIP, AARP

LIAISONS (NON-VOTING)

**Leah Binder, MA, MGA**  
PRESIDENT AND CEO, THE LEAPFROG GROUP

**Kimberly Blair, Attorney at Law**  
LEGAL COUNSEL, THE LEAPFROG GROUP

**Michelle Schreiber, MD**  
DIRECTOR, QUALITY MEASUREMENT AND VALUE-BASED INCENTIVES GROUP, CENTERS FOR MEDICARE & MEDICAID SERVICES

**Christa-Marie Singleton, MD, MPH, FACPM**  
CHIEF MEDICAL OFFICER, U.S. OFFICE OF PERSONNEL MANAGEMENT

# 2024 ANNUAL MEETING AND AWARDS

## 2024 LEAPFROG ANNUAL MEETING

- 8:00 AM** Registration, Exhibits and Poster Session Open
- 8:00 AM** Breakfast
- 9:00 AM** Welcome  
Steve Burrows (Emcee)  
Leah Binder, MA, MGA  
Linda Schwimmer, JD
- 9:30 AM** Keynote Speech  
Colonel Steven L. Coffee, Founding Member of Patients for Patient Safety U.S.
- 10:00 AM** Exhibitor and Poster Break
- 10:30 AM** The Value of Doula Care in Maternal Health  
Ellen Kelsay, MA (Moderator)  
Debra Bingham, DrPH, RN, FAAN  
Randa Deaton  
LaToisha Rouse, CD/PCD (DONA), SBCpE  
Neel Shah, MD, MPP
- 11:30 AM** Memorial for Suzanne Delbanco (1968-2024)  
Catalyst for Payment Reform and The Leapfrog Group
- 12:00 PM** Lunch
- 12:30 PM** Steven Schroeder Award for Outstanding Healthcare CEO Presentation
- 12:45 PM** Inaugural Leapfrog Best Practices Poster Award Ceremony
- 1:00 PM** Recognized Leader in Caring for People Living with Diabetes  
Jean-Luc Tilly, MPA (Moderator)  
Leah Binder, MA, MGA  
Robert Gabbay, MD, PhD, FACP  
Angela Hodges, PHARM.D, RPh, BC-ADM, LSSBB  
Tara Murphy, MPAP
- 2:00 PM** Exhibitor and Poster Break
- 2:30 PM** Conversations to Transform Tomorrow: Networking and Brainstorming Activity  
Josh Berlin, JD (Facilitator)
- 3:30 PM** Closing Remarks from Leapfrog President and CEO  
Leah Binder, MA, MGA
- 4:15 PM** Raffle Drawing  
Steve Burrows

# DINNER AGENDA

## 2024 LEAPFROG ANNUAL AWARDS DINNER

**5:30 PM** Cocktail Reception

**6:30 PM** Opening Address

Steve Burrows  
Leah Binder, MA, MGA  
David Hines, Nozin

Dinner

**7:30 PM** Top ASC Awards Presentation

Aaron Schrader, Leapfrog Board Member, State of Delaware Statewide Benefits Office

Top Hospital Awards Presentation

Randa Deaton, Leapfrog Regional Leader, Purchaser Business Group on Health  
Ashley-Tait Dinger, Leapfrog Regional Leader, Florida Alliance for Healthcare Value  
Bret Jackson, Leapfrog Regional Leader, The Economic Alliance for Michigan  
Adelisa Perez-Hudgins, Leapfrog Regional Leader, New Jersey Health Care Quality Institute  
Jon Rankin, Leapfrog Regional Leader, North Carolina Business Coalition on Health  
Tanika Smith, Leapfrog Regional Leader, Greater Philadelphia Business Coalition on Health  
Trinette Small, Leapfrog Regional Leader, HealthcareTN

Champagne Toast and Dessert



# IN MEMORY OF SUZANNE DELBANCO



Founding CEO of  
The Leapfrog Group,  
2000-2007

Founding Executive  
Director of Catalyst for  
Payment Reform,  
2009-2023

Catalyst for Payment Reform and The Leapfrog Group mourn the profound loss of Suzanne Delbanco, who passed away on May 13, 2024, after a courageous battle with ovarian cancer. Suzanne was a brilliant force for change in health care, whose vision and leadership continue to give life and purpose to our organizations and our common mission for American health care.

Presented by Catalyst for Payment Reform and  
The Leapfrog Group

**Featured Memorial Speaker**

Robert Galvin, MD, CEO, The Right Doctor

**Family**

Tom Delbanco, MD  
Sachu Constantine, MPP

## Close the Safety Gaps at Your Facilities

Reduce risk and improve care with  
VigiLanz Safety Management, now  
an Inovalon solution.

Visit our booth to learn more!



[www.inovalon.com](http://www.inovalon.com)

# FEATURED SPEAKERS



## KEYNOTE SPEAKER

**Colonel Steven L. Coffee, MA**, Founding Member of Patients for Patient Safety U.S.

Col. Coffee is a career active-duty military officer in the U.S. Air Force. He attained an executive master's degree in Clinical Quality, Safety, and Leadership from Georgetown University, a master's in Legislative Affairs from George Washington University, and a bachelor's in Political Science from Morehouse College. He is currently the Associate Deputy Assistant Secretary of the Air Force for Force Management. He specializes in patient safety and health care advocacy, legislative affairs, and policy analysis. Coffee is a founding member of the Patients for Patient Safety U.S. chapter of the World Health Organization, a member of the American Board of Internal Medicine Governance board, and president and CEO of Head-2-Heart Connections LLC. He is an international advocate for patient safety and healthcare quality, and the author of the best-selling children's book "Baby Steven's Gift of Life," inspired by his personal experiences with a diagnostic error that caused his son to have a liver transplant at eight weeks old due to the lack of patient involvement at the time.



## MASTER OF CEREMONIES

**Steve Burrows**, Writer and Director, *Bleed Out*

This award-winning writer/director/performer has been reinventing stereotypes and challenging expectations in film, television, commercials and theatre for more than two decades. In a complete career 180-degree move, Burrows dropped out of show business to take care of his mother, who had gone in for a routine partial hip replacement and came out in a coma with permanent brain damage. The years that followed became Burrows' latest feature: the award-winning, critically acclaimed HBO documentary film, *Bleed Out*. Leapfrog honored his mother by establishing the Judie Burrows Education Institute in 2022 to offer transformational educational programming that advances patient safety and empowers real, measurable progress.



**Leah Binder, MA, MGA**, President and CEO, The Leapfrog Group

President and CEO of The Leapfrog Group since 2008, Leah Binder is a regular contributor to Forbes.com, Harvard Business Review and other publications. She is consistently cited among the most influential people and top women in health care. Before joining Leapfrog, Binder was vice president for a nationally noted rural health system in Farmington, Maine, and prior to that served as senior policy advisor in the New York City Mayor's Office. She started her career at the National League for Nursing.



**Linda Schwimmer, JD**, Chair of the Leapfrog Board of Directors

As President and CEO of the New Jersey Health Care Quality Institute, Linda Schwimmer leads the Quality Institute's work and advances its vision of a world where everyone receives safe, equitable, and affordable health care. Previously, Schwimmer served on the board of the National Quality Forum (NQF) and was co-chair for Governor Phil Murphy's transition team on health. She continues to serve on many nonprofit and government boards and commissions that advance health equity and quality.

# SPEAKERS

**Josh Berlin, JD (Facilitator)**  
Chief Executive Officer, rule of three, LLC



Berlin has been a long-time advisor to The Leapfrog Group. He brings more than 25 years of experience, most of which has been in health care advisory, to his clients. Most recently, he has served as Principal and Co-Practice Leader of Citrin Cooperman's Healthcare Practice and Managing Partner for IBM Watson Health's Strategic Advisory Practice, leading a unique group of consultants in each instance to serve clients across the full healthcare ecosystem (Providers, Health Plans, Employers, Governments, Advocacy, etc.). Before those roles, he served as a principal in the health care consulting practice at Dixon Hughes Goodman (now FORVIS), helping to lead their Strategy Consulting business. Prior to which, he served as a leader in all versions of KPMG (KPMG Consulting/BearingPoint and KPMG). Currently, he serves on the Boards of the Validation Institute, Population Health Management Journal and HealthTrackRx.

**Debra Bingham, DrPH, RN, FAAN, Founder and CEO,**  
Perinatal Consultant, Institute for Perinatal Quality Improvement



Dr. Bingham has developed and led several state and national quality improvement initiatives that have reduced perinatal mortality and morbidity, and she serves on Leapfrog's Maternity Care Expert Panel. She has over 30 years of perinatal clinical experience, was the first executive director of the California Maternal Quality Care Collaborative, a VP for the Association of Women's Health, Obstetric and Neonatal Nurses and an associate professor of Healthcare Quality and Safety at the University of Maryland. Bingham is the founder and CEO of the Institute for Perinatal Quality Institute, whose mission is to expand the use of improvement science to eliminate preventable perinatal morbidity and mortality and eliminate perinatal racial and ethnic disparities. She is a sought-after speaker and has consulted for numerous states and organizations including Tammy Murphy, the First Lady of New Jersey, The Governors Association, Professional Consulting Group the Institute for Healthcare Improvement and the March of Dimes.

**Randa Deaton, Vice President of Purchaser Engagement,**  
Purchaser Business Group on Health



Randa Deaton leads the PBGH Member Value team to engage purchasers in high-impact solutions to improve health care quality, affordability and equity. Deaton worked on the PBGH Comprehensive Maternity Care Common Purchasing Agreement released in May 2024. Prior to joining PBGH, a Leapfrog Regional Leader, Deaton served as the president and CEO of the Kentuckiana Health Collaborative, bringing more than 17 years of experience working directly with health care purchasers. She led the Corporate Community Health Initiative as part of the benefit strategy team for Ford Motor Company from 2004 to 2020. Previously, she led the development of Kentucky's first multi-payer primary care quality and public reporting, the Kentucky Core Healthcare Measures (KCHMS) and the KCHMS purchaser priority measurement set. She also launched the Healthcare Equity Advisory Committee. Deaton

served as vice chair of the National Alliance of Healthcare Purchaser Coalitions, Advisory Board Member of the University of Louisville's School of Public Health and Information Sciences Advisory Board and Taskforce Member of the National Quality Forum's Driving Value through the Next Generation of Quality.

**Robert Gabbay, MD, PhD, FACP, Former Chief Scientific & Medical Officer, American Diabetes Association; Associate Professor, Harvard Medical School**



Dr. Gabbay led the development of the Recognized Leaders in Caring for People Living with Diabetes program in partnership with The Leapfrog Group. Throughout Gabbay's vibrant career, he has had many accomplishments as a basic science researcher, developer of patient communication tools, creator of the first broad scale diabetes registry, designer of care management training programs and leader of one of the largest primary care transformation efforts in the U.S. around the Patient Centered Medical Home. The reach of his work has been recognized through leadership roles in national and international arenas. Gabbay has served as visiting professor, keynote speaker and on organizing committees for global meetings of the ADA, International Diabetes Federation, Endocrine Society, and the Diabetes Technology Society. Along with an extensive peer reviewed publication record, he has appeared in and is frequently quoted by the popular press including the New York Times, CNN, the Washington Post and NPR.

**Robert Galvin, MD, CEO, The Right Doctor**



Dr. Galvin is one of the founders of The Leapfrog Group and Catalyst for Payment Reform (CPR), and currently serves as Chair of the Board of CPR. He is also CEO of The Right Doctor, which connects people with serious illnesses to expert physicians and centers of excellence. From 2010-2022, Galvin was a Senior Advisor at Blackstone, where he served as an Operating Partner and CEO of Equity Healthcare. Prior to Blackstone, he was a Senior Executive at GE, managing their \$3B annual employee health spend and 220 global medical clinics, while also serving as Chief Medical Officer.

Galvin is a board member and committee chair of the Special Olympics of Connecticut and the Institute for Exceptional Care, both nonprofits focused on people with intellectual disabilities.

**David Hines, Executive Vice President of Sales, Nozin**



With over 35 years of experience, Dave has achieved remarkable success in building and leading health care sales teams. Throughout his career, he has consistently demonstrated a commitment to innovation and collaboration with leaders and changemakers in the health care space. In 2000, Dave founded Hinesight Surgical Services, a Smith & Nephew Orthopedic and Sports Medicine distribution company, which he led to become one of the most profitable independent distributorships in Smith & Nephew's history. He joined the Nozin as Executive VP of Sales in 2015, where he developed and established the current sales and service organization. Dave's



leadership and vision are pivotal in driving the awareness and adoption of Nozin's mission to protect all patients.

**Angela Hodges, PHARM.D, RPh, BC-ADM, LSSBB, Texas Health Huguley Hospital Fort Worth South**



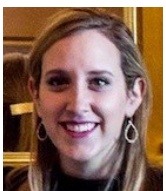
Dr. Angela Hodges is a distinguished quality manager, committed to advancing diabetes care and inpatient glycemic management. With a Doctor of Pharmacy from Texas Southern University and extensive experience at AdventHealth, she has successfully led initiatives to achieve significant recognitions for Texas Health Huguley Hospital, including an Advanced Inpatient Diabetes Certification from The Joint Commission, as well as being named a *Recognized Leader in Caring for People Living with Diabetes* in 2024 by The Leapfrog Group and the American Diabetes Association. Hodges also serves as an Adjunct Clinical Assistant Professor at the University of North Texas Health Science Center College of Pharmacy. She actively contributes to various professional organizations and is a sought-after expert in her field. Notably, she is the lead author of the case study titled "Implementing a Pharmacy Consult Model for Multimodal (Basal-bolus) Insulin Therapy," published in the American Journal of Health-System Pharmacy.

**Ellen Kelsay, MA, President and CEO, Business Group on Health; Member, Leapfrog Board of Directors (Moderator)**



Ellen Kelsay is the president and CEO of the Business Group on Health, the largest non-profit organization devoted exclusively to representing employers' perspectives on critical health, well-being and workforce strategy issues. Kelsay hosts the Business Group on Health podcast and has authored various industry publications including an article in Harvard Business Review on health equity, an op-ed in Modern Healthcare on value purchasing and an article in Pharmaceutical Executive on affordability and transparency for pharmacy transformation. She has been recognized by Modern Healthcare as one of the 100 Most Influential People in Healthcare and has delivered Congressional testimony and is frequently cited in the press. Kelsay is also a member of Leapfrog's Board of Directors.

**Tara Murphy, MPAP, Patient Advocate**



Diagnosed with Type 1 diabetes in 2020, Murphy has contributed a patient perspective to the Leapfrog advisory panel for diabetes care since 2022. Murphy has a decade of experience in evaluation and project management. She specializes in performance measurement and strategic framework development, overseeing all phases of the evaluation process from design to reporting. In her current role, Murphy manages research teams supporting FEMA and other federal agencies dedicated to evaluating resilience programs and previously led healthcare quality measurement projects at the National Quality Forum.

**LaToisha Rouse, CD/PCD (DONA), SBCpE, Owner/Doula, Birth Sisters Doula Services**



With over 100 births under her belt, LaToisha Rouse brings a wealth of knowledge and a calming presence to every birthing experience. Rouse is a skilled lactation consultant, lactation educator and childbirth educator, offering invaluable support and guidance to new mothers. She collaborates with research institutions like Northwestern University, the University of Chapel Hill and several others, offering insights in doula care, patient engagement and health equity. She is a subject matter expert on a PCORI-funded research grant, "Impact of Doula Support During Pregnancy, Childbirth and Beyond (A Health Equity Systematic Review)" with RTI International. She has held several leadership roles, currently serving on the Board of Directors for the American Board of Pediatrics (ABP) and the National Institute for Children's Health Quality (NICHQ) as well as Co-Chair of the National Network of Perinatal Quality Collaboratives (NNPQC). She is a Co-Principal Investigator for an AAMC Next grant, "Nurturing Empathy Among Obstetric Learners," emphasizing her dedication to improving clinician-patient relationships and health care outcomes.

**Neel Shah, MD, MPP, FACOG, Chief Medical Officer, Maven Clinic**



Dr. Neel Shah is a visiting scientist at Harvard Medical School and a globally recognized expert in designing solutions that improve health care and is listed among the "40 smartest people in health care" by the Becker's Hospital Review. His work to build equitable, trustworthy systems of care has been profiled by the New York Times, Good Morning America and other outlets, and is featured in the documentaries "Color of Care" and "Aftershock," which is currently streaming on Hulu. Shah has written more than 50 peer-reviewed academic papers and contributed to four books, including Understanding Value-Based Healthcare (McGraw-Hill). Shah founded Costs of Care, an NGO that curates insights from clinicians and patients to help delivery systems provide better care. In 2017, he co-founded the March for Moms Association to increase public and private investment in the wellbeing of mothers. He serves on the advisory board of the National Institutes of Health, Office of Women's Health Research.

**Jean-Luc Tilly, MPA, Program Director, The Leapfrog Group (Moderator)**



Jean-Luc Tilly joined The Leapfrog Group in 2020 and works directly with experts and stakeholders to identify new opportunities for measurement and coordinates activities of Leapfrog's public reporting and rating programs. Tilly co-leads the Recognizing Excellence in Diagnosis program as well as Leapfrog's efforts to identify new measurement opportunities in hospital billing practices and the informed consent process. Before joining Leapfrog, he served for over four years as a Senior Project Manager at the National Quality Forum, focusing on NQF's project to improve diagnostic safety and quality and the Measure Applications Partnership with CMS to review measures for federal reporting programs.

# INAUGURAL LEAPFROG BEST PRACTICES POSTER SESSION

For the first time, The Leapfrog Group, in partnership with the Johns Hopkins Armstrong Institute for Patient Safety and Quality, is hosting a poster session to share best practices in achieving Leapfrog's standards. This session provides an opportunity for hospitals and ambulatory surgery centers (ASCs) to share case studies directly tied to meeting Leapfrog's Hospital Survey, ASC Survey or Leapfrog Hospital Safety Grade Standards.

Eighteen posters were selected among a competitive number of submissions. Congratulations to all poster presenters, and thank you for sharing your hard work!

## WINNING HOSPITAL POSTER

### Holy Name Medical Center

Teaneck, New Jersey

*NTSV C-Section and Episiotomy Rates through Rapid-Cycle, Evidence-Based Actions at a Community-Based Hospital*

## WINNING ASC POSTER

### Baptist Health Surgery Center

Miami, Florida

*Development of an Electronic Surgical Site Surveillance (SSI) Program in a Multi-Surgery ASC without an Electronic Medical Record*

---

### Holy Name Medical Center

*NTSV C-Section + Episiotomy Reduction*

### Baptist Outpatient Services ASC/Baptist Health

*Surgical Site Infection Surveillance*

### Inspira Health

*NTSV C-Section Reduction*

### Advent Health

*Medication Safety - CPOE*

### Maimonides Medical Center

*Dashboard to Reduce Adverse Events*

### Hackensack Meridian Jersey Shore Medical Center

*Reduced Inpatient Hypoglycemia Rate*

### University of Michigan Health

*Surgical Safety Checklist*

### Texas Huguley Hospital Forth Worth South

*ADA Standards of Care/2024  
Recognized Leader*

### Bergen New Bridge Medical Center

*Surgical Safety and Quality*

### Kaiser Permanente Santa Clara

*Reducing NSQIP Surgical Site Infections*

### Newark Beth Israel Medical Center

*Hand Hygiene Improvements*

### Henry Ford Hospital

*C.diff Reduction*

### Trinitas Regional Medical Center

*CLABSI Reduction*

### Jefferson Health

*Medication Safety*

### Southwest CT Surgery Center

*Patient Experience/OAS CAHPS*

### Crozer Health

*Hand Hygiene Observation & Compliance*

### New York City Health + Hospital/Metropolitan

*Hand Hygiene Improvements*

### Johns Hopkins Health System

*Never Events*

Become a  
**Recognized Leader in Caring  
for People Living with Diabetes**

Hospitals can be celebrated when they provide safe, high-quality care for people living with diabetes. The online application is now open through January 31, 2025.



[leapfroggroup.org/diabetes](https://leapfroggroup.org/diabetes)

EARN A LEAPFROG  
**CERTIFIED COACH**  
BADGE



Learn directly from subject matter experts about key aspects of the Leapfrog Hospital Survey.



[LEAPFROGGROUP.ORG/CERTIFIEDCOACH](https://leapfroggroup.org/certifiedcoach)



# Leapfrog Giving Day

DONATE TODAY TO SAVE LIVES



Preventable medical errors claim hundreds of thousands of lives in the U.S. each year—together, we are changing that.

The Leapfrog Judie Burrows Education Institute offers patients, families, purchasers and providers the tools they need to make empowered health care choices and prevent medical harm. It is critical to Leapfrog's effectiveness on patient safety at every level.

Learn more: [leapfroggroup.org/JBEI](https://leapfroggroup.org/JBEI)



Help increase our impact:

[LEAPFROGGROUP.ORG/DONATE](https://leapfroggroup.org/donate)

# STEVEN SCHROEDER AWARD FOR OUTSTANDING HEALTHCARE CEO

## Award Winner



**Rick Anderson**  
President and Chief  
Executive Officer  
St. Luke's University Health  
Network

The winner of the 2024 Steven Schroeder Award for Outstanding Healthcare CEO, presented by Costs of Care and The Leapfrog Group, is Rick Anderson, President and CEO of St. Luke's University Health Network (SLUHN) in Bethlehem, Pennsylvania.

Mr. Anderson has held this role since 1985 and has overseen St. Luke's evolution into one of the larger health networks in Pennsylvania and Western New Jersey (from an operating budget of \$63 million in 1985 to \$3.7 billion in 2024). SLUHN operates 15 hospital campuses with 20,000 employees and has more than 350 outpatient locations in 11 counties. St. Luke's also has the largest network of trauma centers in Pennsylvania.

In 2024, St. Luke's was the only health system in the United States to be recognized for excellence in all three significant health care honors—objective measures of quality, safety and overall performance—including:

- **The Leapfrog Hospital Safety Grade: All A's across St. Luke's acute care hospitals**
- **Medicare & Medicaid Star Ratings: Five stars at 10 St. Luke's hospitals**
- **Premiere's PINC AI 100 Top Hospitals: St. Luke's has made the list 10 years in a row**

During Anderson's tenure, St. Luke's has received more than 175 national awards for quality. In 2021, St. Luke's University Hospital in Bethlehem was recognized as the #1 teaching hospital in the country. In 2021, St. Luke's also ranked among the 15 top health systems nationally.



Costs of Care is a leading non-profit cultivating change agents who will lead the creation of a more affordable and equitable health system. The Steven Schroeder Award for Outstanding Healthcare CEO recognizes a hospital and/or health system CEO who has demonstrated courageous and ethical leadership addressing the twin issues of affordability and quality of health care in their community.



Limited Population

# THE FIRST AND ONLY FDA-APPROVED PRODUCT OF ITS KIND IN THE U.S.

DefenCath is available for purchase for inpatient and outpatient use.

You are encouraged to report negative side effects of prescription drugs to the FDA. Visit MedWatch or call 1-800-FDA-1088.

DEFENCATH, CORMEDIX, THE CORMEDIX LOGO AND CORMEDIX INC. ARE REGISTERED TRADEMARKS OF CORMEDIX INC. © 2024 CORMEDIX INC. ALL RIGHTS RESERVED. US-DC-0115 09/24



# TEST TODAY. TREAT TOMORROW.

Next-morning PCR results for all common infections means you can target treatment & **GET YOUR PATIENTS HEALTHIER FASTER!**

**2-3**

Fewer follow-up outpatient service visits

**\$1100**

Avg. savings per patient with vaginitis

**48%**

of providers forgo Empiric therapy



Visit us online at **HealthTrackRx.com**





# 2024 LEAPFROG AWARDS DINNER PROGRAM



## ABOUT LEAPFROG AWARDS

The Leapfrog Group recognizes the highest performing hospitals and ambulatory surgery centers (ASCs) in the United States with its prestigious Top Hospital and Top ASC Awards.

The awards are not given to a set number of hospitals and ASCs but, rather, to facilities that meet the high standards defined in each year's Top Hospitals and Top ASCs Methodologies. Top Hospitals and ASCs are recognized in five categories: Top ASC, Top Children's Hospital, Top General Hospital, Top Rural Hospital and Top Teaching Hospital.

Leapfrog congratulates the 2024 Top Hospitals and Top ASCs, and commends their leadership, staff and volunteers for their commitment to patient safety and quality.



**PROTECTA**<sup>®</sup>

by *sodexo*<sup>\*</sup>

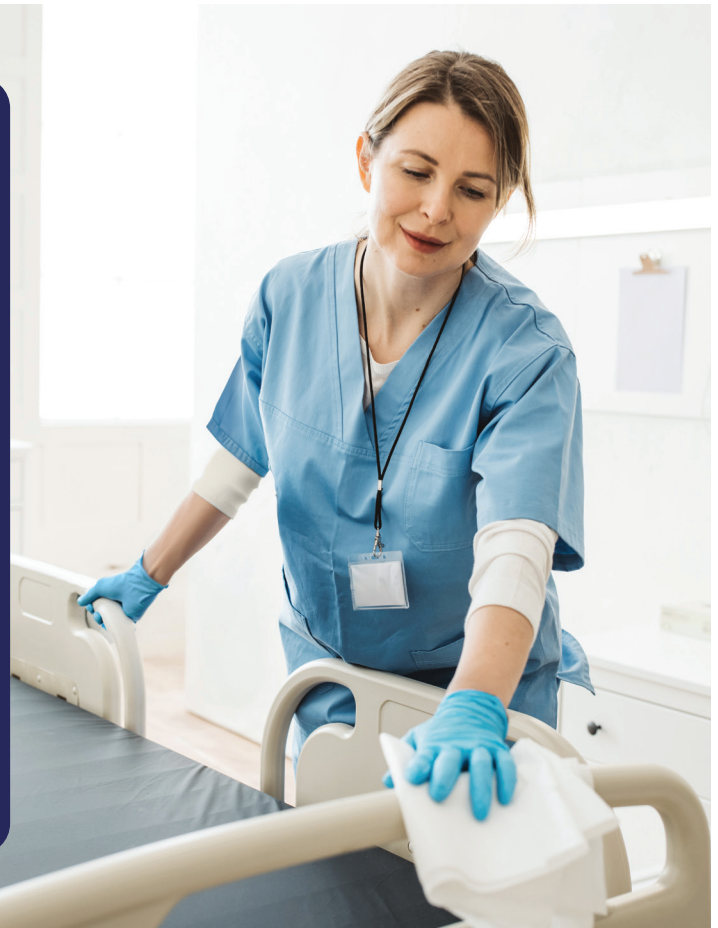
Ensuring clean and safe environments for your patients, visitors and staff



Scan the QR code to learn more



**LEAPFROG**  
Partners  
Advisory  
Committee



Let's harness the power of your data for better patient care and provider performance.

## Your Quality Data Put to Good Use.

- ➔ Hospital eQMs
- ➔ Clinician eQMs
- ➔ ACO eQMs & CQMs
- ➔ Health Equity Measures
- ➔ Abstracted Measures
- ➔ Registry

medisolv



# TOP AMBULATORY SURGERY CENTERS

## California

Sequoia Surgical Pavilion

## Connecticut

Hartford Healthcare Cheshire Surgery Center

Orthopedic Associates Surgery Center

Southwest Connecticut Surgery Center

## Florida

Baptist Health Endoscopy Center at Coral Springs

Baptist Health Endoscopy Center at Flagler

Baptist Health Endoscopy Center at Galloway North

Baptist Health Endoscopy Center at Galloway South

Baptist Health Eye Surgery Center at Sunrise

Baptist Health Surgery Center at Bethesda West

Baptist Health Surgery Center Coral Gables

Baptist Health Surgery Center at Kendall

Baptist Health Surgery Center at Miami Beach

Baptist Health Surgery Center at Northpoint

Baptist Health Surgery Center at Plantation

Baptist Health Surgery Center at South Miami

Baptist Health Surgery Center at South Palm

## Maryland

Johns Hopkins Surgery Centers - Bethesda

Johns Hopkins Surgery Centers - Green Spring Station Pavilion III

Johns Hopkins Surgery Centers - Knoll North

Johns Hopkins Surgery Centers - Lutherville

Johns Hopkins Surgery Centers - White Marsh

## New York

Specialists One Day Surgery Center

## North Carolina

Novant Health Ballantyne Outpatient Surgery (FKA Presbyterian Sameday Surgery Center at Ballantyne LLC)

Novant Health Brunswick Endoscopy Center

Novant Health Clemmons Outpatient Surgery Center

Novant Health Huntersville Outpatient Surgery (AKA Presbyterian Surgery Center Huntersville)

Novant Health Kernersville Outpatient

## Pennsylvania

St. Luke's Endoscopy Center - Buxmont

## Rhode Island

The Surgery Center of Rhode Island

## Tennessee

Knoxville Orthopaedic Surgery Center



# 2024 TOP HOSPITALS



## Alaska

Bassett Army Community Hospital, *Top General Hospital*

## Arizona

Chandler Regional Medical Center, *Top Teaching Hospital*

Mercy Gilbert Medical Center, *Top Teaching Hospital*

## California

Kaiser Foundation Hospital - Antioch,  
*Top Teaching Hospital*

Kaiser Foundation Hospital - Baldwin Park Medical Center,  
*Top Teaching Hospital*

Kaiser Foundation Hospital - Manteca,  
*Top General Hospital*

Kaiser Foundation Hospital - Modesto,  
*Top General Hospital*

Kaiser Foundation Hospital - San Jose,  
*Top Teaching Hospital*

Kaiser Foundation Hospital - San Rafael,  
*Top General Hospital*

Kaiser Foundation Hospital - South San Francisco,  
*Top Teaching Hospital*

Kaiser Permanente Fontana Medical Center,  
*Top Teaching Hospital*

Kaiser Permanente Ontario Medical Center,  
*Top Teaching Hospital*

Kaiser Permanente Orange County-Irvine Medical Center,  
*Top Teaching Hospital*

Kaiser Permanente Riverside Medical Center,  
*Top Teaching Hospital*

Kaiser Permanente San Diego Medical Center,  
*Top Teaching Hospital*

Loma Linda University Medical Center East Campus,  
*Top Teaching Hospital*

Mercy Hospital of Folsom, *Top General Hospital*

Methodist Hospital of Sacramento, *Top Teaching Hospital*

Montclair Hospital Medical Center, *Top General Hospital*

Parkview Community Hospital Medical Center,  
*Top General Hospital*

Sharp Mary Birch Hospital for Women & Newborns,  
*Top Teaching Hospital*

Sharp Memorial Hospital, *Top Teaching Hospital*

Sierra Nevada Memorial Hospital, *Top Rural Hospital*

St. Elizabeth Community Hospital, *Top Rural Hospital*

Stanford Health Care, *Top Teaching Hospital*

Sutter Davis Hospital, *Top General Hospital*

Sutter Maternity & Surgery Center of Santa Cruz,  
*Top General Hospital*

UCSF Health - Mission Bay, *Top Teaching Hospital*

UCSF Helen Diller Medical Center at Parnassus Heights,  
*Top Teaching Hospital*

UCSF Medical Center at Mount Zion,  
*Top Teaching Hospital*

USC Norris Cancer Hospital, *Top Teaching Hospital*

Valley Children's Hospital, *Top Children's Hospital*

## Colorado

AdventHealth Castle Rock, *Top General Hospital*

## Connecticut

Hartford Hospital, *Top Teaching Hospital*

Windham Community Memorial Hospital,  
*Top General Hospital*

## Delaware

Beebe Healthcare Specialty Surgical Hospital,  
*Top Rural Hospital*

## Florida

AdventHealth Altamonte Springs, *Top General Hospital*

AdventHealth Apopka, *Top General Hospital*

AdventHealth DeLand, *Top General Hospital*

AdventHealth for Children, *Top Children's Hospital*

AdventHealth New Smyrna Beach, *Top General Hospital*

AdventHealth Orlando, *Top Teaching Hospital*

AdventHealth Wauchula, *Top Rural Hospital*

AdventHealth Winter Park, *Top Teaching Hospital*

Johns Hopkins All Children's Hospital,  
*Top Children's Hospital*

Lakewood Ranch Medical Center, *Top Teaching Hospital*

Larkin Community Hospital, *Top Teaching Hospital*

Nicklaus Children's Hospital, *Top Children's Hospital*

Orlando Health Arnold Palmer Hospital for Children,  
*Top Children's Hospital*

Orlando Health - Health Central Hospital,  
*Top Teaching Hospital*

Orlando Health South Lake Hospital,  
*Top Teaching Hospital*

Orlando Health - Orlando Regional Medical Center,  
*Top Teaching Hospital*

Orlando Health Winnie Palmer Hospital for Women and Babies, *Top Teaching Hospital*  
Wolfson Children's Hospital, *Top Children's Hospital*

### **Georgia**

AdventHealth Murray, *Top General Hospital*

### **Illinois**

Loretto Hospital, *Top Teaching Hospital*  
Provident Hospital of Cook County, *Top General Hospital*  
Rush University Medical Center, *Top Teaching Hospital*  
University of Chicago Medical Center,  
*Top Teaching Hospital*

### **Louisiana**

Bayne-Jones Army Community Hospital,  
*Top Rural Hospital*

### **Maine**

MaineHealth Maine Medical Center Portland,  
*Top Teaching Hospital*  
MaineHealth Pen Bay Hospital, *Top Rural Hospital*

### **Maryland**

MedStar Good Samaritan Hospital, *Top Teaching Hospital*  
MedStar St. Mary's Hospital, *Top Teaching Hospital*

### **Massachusetts**

Addison Gilbert Hospital, part of Beth Israel Lahey Health,  
*Top General Hospital*  
Brigham and Women's Faulkner Hospital,  
*Top Teaching Hospital*  
Brigham and Women's Hospital, *Top Teaching Hospital*  
Massachusetts General Hospital, *Top Teaching Hospital*  
Newton-Wellesley Hospital, *Top Teaching Hospital*

### **Michigan**

Trinity Health Livingston Hospital, *Top Teaching Hospital*

### **Missouri**

Mercy Hospital Jefferson, *Top General Hospital*  
Mercy Hospital South, *Top Teaching Hospital*  
Mercy Hospital Springfield, *Top Teaching Hospital*

### **Nevada**

North Vista Hospital, *Top General Hospital*  
Renown South Meadows Medical Center,  
*Top Teaching Hospital*

### **New Jersey**

Bergen New Bridge Medical Center, *Top Teaching Hospital*  
Englewood Hospital and Medical Center,  
*Top Teaching Hospital*  
Saint Michael's Medical Center, *Top Teaching Hospital*  
St. Luke's Warren Campus, *Top Teaching Hospital*

### **New Mexico**

Heart Hospital of New Mexico, *Top Teaching Hospital*

### **New York**

Catholic Health System - Kenmore Mercy Hospital,  
*Top General Hospital*  
Northern Dutchess Hospital, *Top Teaching Hospital*  
Northwell Lenox Hill Hospital, *Top Teaching Hospital*  
St. Francis Hospital Heart Center, *Top Teaching Hospital*  
Syosset Hospital, *Top Teaching Hospital*  
White Plains Hospital, *Top General Hospital*

### **North Carolina**

FirstHealth Moore Regional Hospital - Hoke,  
*Top Rural Hospital*  
Hoke Healthcare, *Top General Hospital*  
Iredell Memorial Hospital, *Top General Hospital*  
Novant Health Forsyth Medical Center,  
*Top Teaching Hospital*  
Novant Health Huntersville Medical Center,  
*Top Teaching Hospital*  
Novant Health Kernersville Medical Center,  
*Top General Hospital*  
Novant Health Matthews Medical Center,  
*Top General Hospital*  
Novant Health Presbyterian Medical Center,  
*Top Teaching Hospital*  
Watauga Medical Center, *Top Rural Hospital*

### **Ohio**

Coshocton Regional Medical Center, *Top Rural Hospital*  
Mount Carmel New Albany, *Top General Hospital*

### **Oklahoma**

AHS Southcrest Hospital, LLC dba Hillcrest Hospital South,  
*Top Teaching Hospital*  
Hillcrest Hospital Pryor, *Top Rural Hospital*  
Hillcrest Medical Center, *Top Teaching Hospital*

### **Pennsylvania**

Frick Hospital Independence Health System,  
*Top General Hospital*  
Penn State Health Lancaster Medical Center,  
*Top General Hospital*  
St. Luke's Easton Campus, *Top Teaching Hospital*  
St. Luke's Monroe Campus, *Top Rural Hospital*  
St. Luke's Hospital - Allentown Campus,  
*Top Teaching Hospital*  
St. Luke's University Hospital - Bethlehem Campus,  
*Top Teaching Hospital*

UPMC Carlisle, *Top General Hospital*  
UPMC Children's Hospital of Pittsburgh,  
*Top Children's Hospital*

### South Carolina

Carolina Pines Regional Medical Center,  
*Top General Hospital*  
Prisma Health Baptist Hospital, *Top Teaching Hospital*  
Prisma Health Greenville Memorial Hospital,  
*Top Teaching Hospital*  
Prisma Health Hillcrest Hospital, *Top Teaching Hospital*  
Prisma Health Laurens County Hospital,  
*Top Teaching Hospital*  
Prisma Health Oconee Memorial Hospital, *Top Rural Hospital*  
Prisma Health Patewood Hospital, *Top Teaching Hospital*  
Roper St. Francis Healthcare - Berkeley Hospital,  
*Top General Hospital*  
Roper St. Francis Healthcare - Bon Secours St. Francis  
Hospital, *Top General Hospital*  
Roper St. Francis Healthcare - Mount Pleasant Hospital,  
*Top General Hospital*

### Tennessee

Monroe Carell Jr. Children's Hospital at Vanderbilt,  
*Top Children's Hospital*

### Texas

AdventHealth Rollins Brook, *Top Rural Hospital*  
Baylor Scott & White Heart and Vascular Hospital,  
*Top Teaching Hospital*  
Dallas Medical Center, *Top General Hospital*  
Seton Medical Center Harker Heights,  
*Top Teaching Hospital*  
UT Health Carthage, *Top Rural Hospital*  
UT Health Pittsburg, *Top Rural Hospital*  
UT Southwestern's William. P. Clements Jr. University  
Hospital, *Top Teaching Hospital*  
UT Southwestern's Zale Lipshy Pavilion,  
*Top Teaching Hospital*

### Virginia

Fauquier Health, *Top General Hospital*  
Inova Fairfax Hospital, *Top Teaching Hospital*  
Inova Fair Oaks Hospital, *Top Teaching Hospital*  
Inova Loudoun Hospital, *Top Teaching Hospital*  
Warren Memorial Hospital, *Top Teaching Hospital*

### Washington

St. Clare Hospital, *Top Teaching Hospital*

### Washington, District of Columbia

MedStar Washington Hospital Center,  
*Top Teaching Hospital*

# STAY CONNECTED WITH US



[leapfroggroup.org/news-events](http://leapfroggroup.org/news-events)



The Leapfrog Group



@LeapfrogGroup



@TheLeapfrogGroup



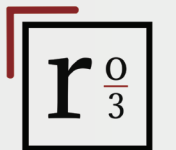
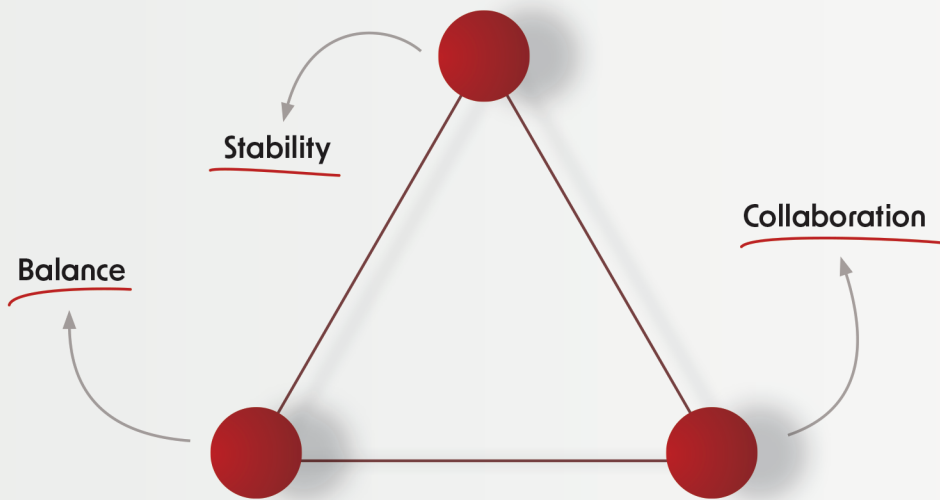
@TheLeapfrogGroup



# Work with advisors who turn challenges into assets.

At ro3, we discover the “three (or so) things that matter” most with and for our clients. Our team **emphasizes stability to increase endurance, evokes balance despite surrounding pressure,** and **encourages strength through collaboration**—as a triangle does across its three points.

Together, let’s find your path to disruption, before your organization is disrupted.



rule of three.



Learn more at  
[ro3.com](https://ro3.com)



Follow us on LinkedIn for the latest updates on industry trends.



## Watch for the 5th Annual March Healthcare Classic!

Follow the year’s most impactful healthcare trends as they face off in a competitive bracket to reveal which industry trends reign supreme.



Coming March 2025  
to [ro3.com](https://ro3.com)



THE PERFECT *Fit* FOR YOUR FACILITY

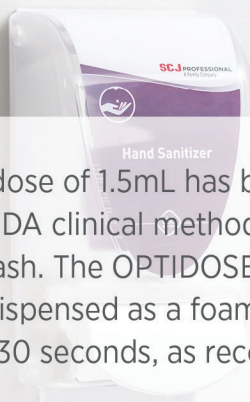
DIAL® FIT® Hand Soap and Sanitizer Dispensers

**#1 DOCTOR RECOMMENDED\***  
**KILLS 99.99% OF BACTERIA\*\***

 ©2024 Henkel Corporation. All rights reserved. \*Antibacterial Hand Soap Brand. \*\*Encountered in away-from-home settings.



Introducing  
**Alcare® Enhanced**  
featuring **OPTIDOSE™** technology



This formula at a dose of 1.5mL has been tested in accordance with FDA clinical methods for Healthcare Personnel Handwash. The OPTIDOSE™ pump delivers 1.5ml of product dispensed as a foam; enough to keep hands wet for 20-30 seconds, as recommended by the CDC and WHO.



<https://www.cdc.gov/clean-hands/about/index.html>  
<https://www.who.int/publications/m/item/how-to-handwash>

# YOUR MATTRESSES MAY BE SABOTAGING YOUR PATIENT SAFETY INITIATIVES:

Investigate the Safety-Enhancing Soteria® Bed Barrier



It's a product with a MIFU\* designed to work with you in reducing patient HAIs from mattress transmission.

Learn More: [www.TrinityGuardion.com](http://www.TrinityGuardion.com)

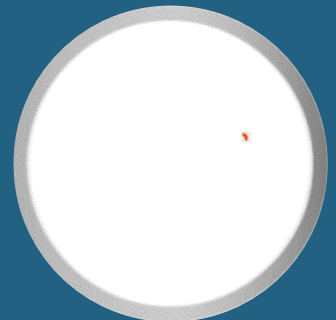
TRINITY  GUARDION



\*Manufacturer's Instructions for Use



Culture showing bacterial growth from a "Clean" Mattress



Culture from laundered bed barrier

# glytec®



## Achieve better outcomes—for your patients *and* your business.

With our leading inpatient diabetes and insulin management solution, our clients exceed quality, safety and new CMS measures.



(864) 370-3297 | [info@glytec.com](mailto:info@glytec.com) | [glytec.com](http://glytec.com)



## Innovation. Insights. Improvement.



### HAND HYGIENE

- Boost Performance
- Reduce HAI's
- Meets Leapfrog Requirements



### NURSING INSIGHTS

- Reduce Patient Falls
- Prevent Pressure Injuries
- Improve HCAHPS Scores



### ASSET TRACKING

- Reduce Costs
- Eliminate Waste
- Improve Utilization



### CONTACT TRACING

- Protect Staff and Patients
- Accelerate Exposure
- Response Time

## A PARTNERSHIP TO CREATE SAFER HOSPITALS



Innovative solutions that help improve patient and caregiver safety and efficiency. Our solutions are designed with our hospital partners and their patients in mind, to save lives by reducing hospital-acquired conditions and preventable never-events, while maximizing operational efficiency and profitability for healthcare facilities.

Visit [www.swipesense.com](http://www.swipesense.com) to learn more

## Safer Care with Ecolab®



### Ecolab® Hand Hygiene Program

#### Hand Hygiene Solutions for Infection Prevention

Ecolab® Hand Hygiene Program empowers hospitals to enhance infection prevention through real-time compliance monitoring, advanced hand hygiene solutions, and actionable insights. Drive better outcomes for patients and create a safer environment for everyone.

#### KEY BENEFITS

- Real-Time Compliance Monitoring
- Reduced Infection Risk
- Effective Staff Training & Support



# AARP®

**“It is only in the giving of oneself to others that we truly live.”**

—Dr. Ethel Percy Andrus  
Founder AARP

Congratulations to The Leapfrog Group and this year’s awardees. We applaud your leadership and ongoing work to advance patient safety and public policy that drives much needed change.





## YOUR BEST HEALTH COVERED BY BLUE

We help you get the care you need, so you can feel healthier in body and mind.



Learn more at [HorizonBlue.com](https://HorizonBlue.com)

Horizon Blue Cross Blue Shield of New Jersey is an independent licensee of the Blue Cross Blue Shield Association. Coverage may vary by plan.

# TRANSFORMING MSK CARE

National Excellence. Delivered Locally.



We are proud to collaborate with The Leapfrog Group on our shared commitment to appropriate, effective and safe care.

# LESS IS MORE

The PURELL® ES10 Dispensing System provides groundbreaking technology that means less maintenance, less waste, and more smart solutions for healthcare with the PURELL SMARTLINK® Hand Hygiene System.

- ✓ NO MORE CHANGING BATTERIES\*
- ✓ CUSTOMIZE YOUR HAND HYGIENE PLAN
- ✓ SAVE TIME & HELP IMPROVE OUTCOMES\*\*



Learn more at [healthcare.GOJO.com/smartlink](https://healthcare.GOJO.com/smartlink).



\*Under normal use conditions for the ES10 dispenser. Smartlink Module battery designed to last 4-5 years; Service Alerts will notify when batteries need to be changed.

\*\*Improved Outcomes refers to increased hand hygiene compliance among healthcare workers as noted in Arbogast JW, et al. (2022). The impact of automated hand hygiene monitoring with and without complementary improvement strategies on performance rates. Infection Control & Hospital Epidemiology, <https://doi.org/10.1017/ice.2022.141>.

©2024 GOJO Industries, Inc. All rights reserved. | 37150 (9/2024)





# Metrex™

## Trusted CaviWipes. Improved Packaging. Now on Even More Contracts.



Scan the QR Code to Learn More

©2024 Metrex Research, LLC. All trademarks are property of Metrex Research, LLC. All Rights Reserved. MKT-24-1423 Rev 0



# Paramount

IS PROUD TO SUPPORT THE IMPORTANT WORK OF THE LEAPFROG GROUP



# RESOURCES FROM THE LEAPFROG GROUP

## Recent Reports and News

### ***U.S. Hospitals Are Making Dramatic Progress in Hand Hygiene - 2024 Leapfrog Data Analysis***

The percentage of hospitals achieving The Leapfrog Group's Hand Hygiene Standard increased almost sevenfold since 2020, with leaders' compensation increasingly tied to gains, and adoption of key technology doubling.

### ***Recognizing Excellence in Diagnosis: Recommended Practices for Hospitals - 2024 Update***

This report updates the 2022 recommendations on diagnostic practices by incorporating recent advances in quality measurement, field-testing practices and feedback from hospitals.

[Leapfroggroup.org/news-events](https://leapfroggroup.org/news-events)

## Data Licensure

The Leapfrog Group is proud to make its data available to health plans, transparency vendors and others through its data licensure program. Unique, purchaser-driven data is available through the following programs:

- The **Leapfrog Hospital Survey**, which includes rates of C-sections, practices in place to prevent errors, surgical volumes for high-risk procedures and more
- The **Leapfrog Hospital Safety Grade**, our letter grade rating of how safe hospitals are for patients
- Leapfrog's **Value-Based Purchasing Platform**, a methodology for purchasers and payors to identify the highest value facilities for care using a national, standardized set of measures

[Leapfroggroup.org/data](https://leapfroggroup.org/data)

## Judie Burrows Education Institute

The Judie Burrows Education Institute offers transformational educational programming that advances patient safety and empowers real, measurable progress.

**Certified Coach Training** Leapfrog Certified Coaches are health care consultants, solution providers and innovation partners who offer services, products and technology designed to improve patient safety and health care quality.

**Patient Toolkits** Comprehensive toolkits are available to empower patients with the knowledge and resources needed to make informed decisions about medical care.

**Purchaser Value Toolkit** This robust collection of materials assists employers in communicating key information about the Leapfrog Hospital Safety Grade and patient safety to their employees, including the Lives & Dollars Lost to Medical Errors Calculator.

[See all the resources available through the Judie Burrows Education Institute at leapfroggroup.org/JBEI.](https://leapfroggroup.org/JBEI)

## Recognized Leader in Caring for People Living with Diabetes

The Leapfrog Group, in partnership with the American Diabetes Association, launched the first-ever national recognition program recognizing hospitals providing safe, high-quality health care for people living with diabetes. The deadline for the 2025 cycle is January 31.

[Leapfroggroup.org/diabetes](https://leapfroggroup.org/diabetes)

## Resources for Hospitals and ASCs

**Innovators For Leapfrog: Solutions for Facilities** Whether you're looking for resources about hand hygiene, environmental care, patient care and safety or workforce engagement, Innovators For Leapfrog can help provide the tools needed for health care providers to thrive.

[Leapfroggroup.org/industry-partners/innovators-leapfrog](https://leapfroggroup.org/industry-partners/innovators-leapfrog)

**Leapfrog's Health System Support Subscription** Leapfrog's Health System Support subscription for multi-hospital health systems is designed to help Survey coordinators and health system leaders make it easy to monitor, compare and analyze your hospitals' Leapfrog Hospital Survey Results, Hospital Safety Grades and Competitive Benchmarking scores.

[Leapfroggroup.org/survey-materials/support-health-systems](https://leapfroggroup.org/survey-materials/support-health-systems)

**Leapfrog Hospital Survey Webinar Series** The Leapfrog Hospital Survey Webinar Series is designed for Survey coordinators, hospital leaders, and others who would benefit from a more interactive presentation of Survey materials and information.

[Leapfroggroup.org/survey-materials/hospital-survey-webinar-series](https://leapfroggroup.org/survey-materials/hospital-survey-webinar-series)

**Competitive Benchmarking Reports** Competitive Benchmarking Reports allow you to compare critical aspects of your care to those at other hospitals participating in the Leapfrog Hospital Survey across the country.

[Leapfroggroup.org/ratings-reports/competitive-benchmarking](https://leapfroggroup.org/ratings-reports/competitive-benchmarking)





# PROTECT EVERY PATIENT<sup>SM</sup>



## REDUCE RISK OF AVOIDABLE INFECTIONS, RELATED EXCESS LENGTH OF STAY AND READMISSIONS

Nasal colonization is a primary risk factor for healthcare-associated infections (HAIs). The new patient safety paradigm is to make universal nasal decolonization the standard of care, without using antibiotics. This is our **Protect Every Patient<sup>SM</sup>** service mission to help with your hospital IP program.

In published studies, hospitals using **Nozin NOVA<sup>SM</sup>** programs powered by **Nozin<sup>®</sup> Nasal Sanitizer<sup>®</sup>** antiseptic report lower infections and significant cost savings. Learn more about how we can help. Start with a no cost risk assessment today.

*We commend  
**The Leapfrog Group  
and 2024 Awardees**  
for steadfast and inspiring  
dedication to patient safety.*

**Nozin.**

\*Outcomes reported by actual customers. Your results may vary. References: [nozin.com/clinical-outcomes](https://nozin.com/clinical-outcomes). ©2024 Global Life Technologies Corp. All rights reserved. Made in USA. Nozin<sup>®</sup>, Nasal Sanitizer<sup>®</sup>, Protect Every Patient<sup>SM</sup>, and NOVA<sup>SM</sup> are trademarks of Global Life Technologies Corp. Other trademarks are property of their respective owners. Nozin<sup>®</sup> Nasal Sanitizer<sup>®</sup> antiseptic is an OTC topical drug intended to decrease bacteria on nasal vestibule skin. No claim is made that it has an effect on any specific disease. Patent nos.: [nozin.com/patents](https://nozin.com/patents).